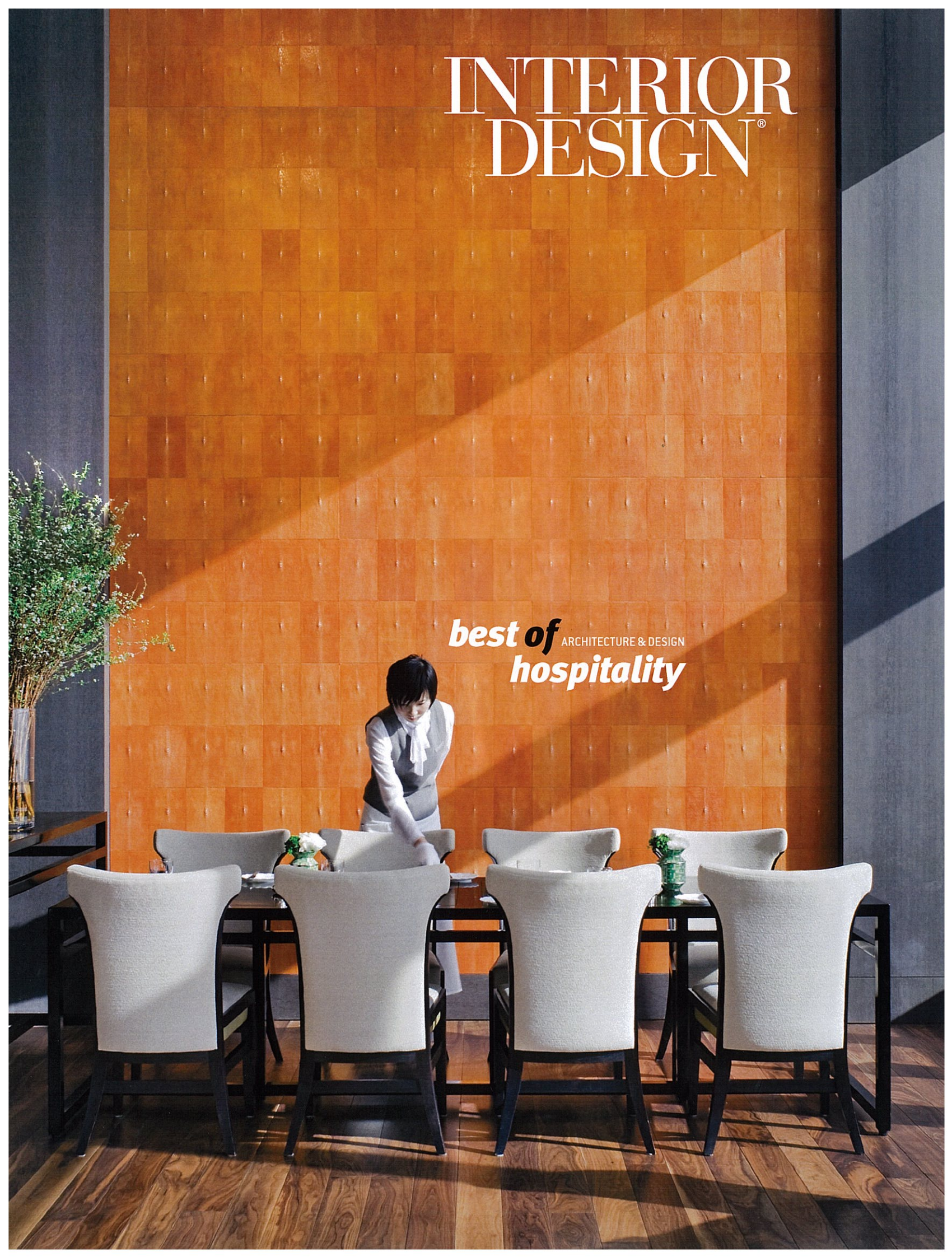


INTERIOR DESIGN[®]

best of ARCHITECTURE & DESIGN
hospitality



AB Concept



W RETREAT & SPA BALI—SEMINYAK INDONESIA



Clockwise from above: A terrace off the lobby is lined with generous daybeds. A curved feature wall treated to piano-finish black lacquer forms a dramatic display in *W The Store*, lit by an acrylic chandelier. In the *EWOW Suite's* private spa, massage tables look onto the Indian Ocean and, through an oculus, the azure sky. ➤

This beachfront property's evocative decor plays against type: The project brief was to upend expectations of Balinese resort style. To firm codirectors Ed Ng and Terence Ngan, that meant respecting the island's cultural heritage—and referencing its distinct natural features—while giving traditional Indonesian motifs a bold, contemporary twist. Thus a recurrence of neon-pink hues sparked by Balinese sunsets, cheeky landscape references, and sly abstractions of vernacular architecture—from pagodalike pendant lights to stepped ceilings recalling the silhouettes of local temples.

The paisley design on the lobby ceiling honors Hindu henna-work, blowing it up to grand proportions; below, terrazzo flooring shimmering with inlaid shells was cut in sinuous curves to resemble leaves. The wall behind reception is actually a mirrored timber screen supporting handblown-glass jars, each housing a capiz shell that emits a singsongy whistle when it vibrates in the sea breeze. While this open structure encourages natural ventilation during the dry season, monsoon shutters ensure full protection during the wet months.

Speaking of the elements, guest suites bring the outdoors in. Sleeping areas showcase restful shades of green, like those of the island's lush jungles. Carpeting mimics lotus ponds. And skylights above soaking tubs feature fretwork that casts dappling shadows similar to water reflections. Seems that at least one Bali-resort trope was preserved...the otherworldly sense of tranquility.



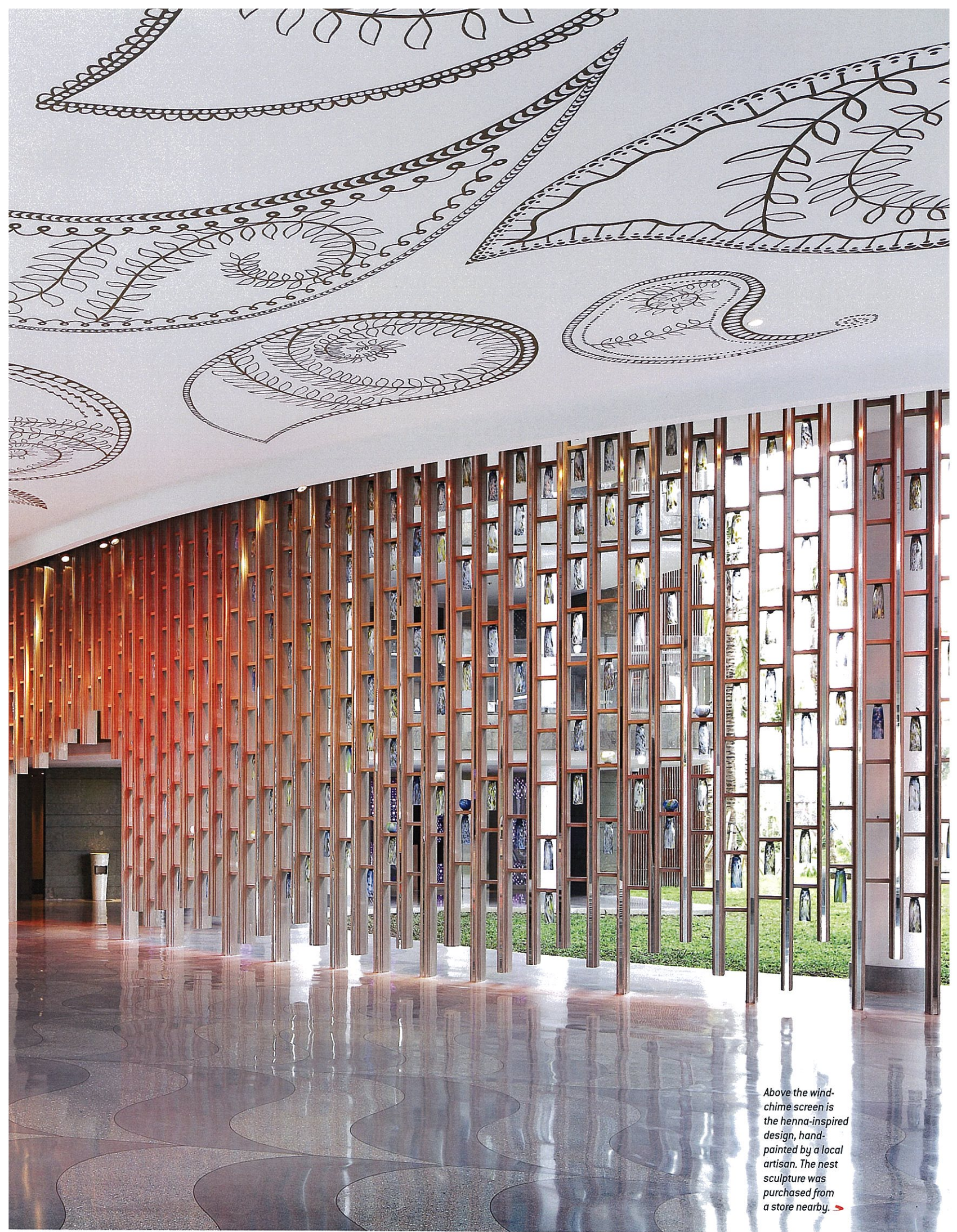
333,681 sf

158 retreats and suites and 79 pool villas

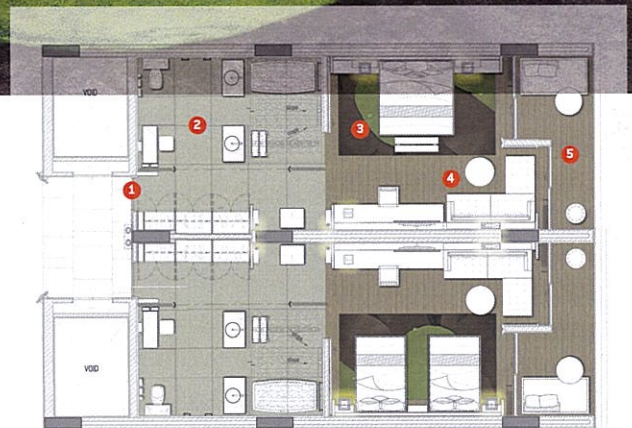
The two-bedroom EWOW Suite boasts a living room, dining room, show kitchen, en suite spa, study, and balcony with wraparound ocean views



← WIRED & CARDS
← WHITE TIE & E
← STARTISH BLOO
← W/C
← WET
← GREAT POOM
← FIRE
← WOO BAR
→ LIFTS
← AWAY SPA
← SWEAT



Above the wind-chime screen is the henna-inspired design, hand-painted by a local artisan. The nest sculpture was purchased from a store nearby. ➔



PROJECT TEAM ED NG, TERENCE NGAN

PHOTOGRAPHY CHESTER ONG

www.abconcept.net



Clockwise from top: Guest retreats feature weathered-oak headboards and throws detailed with hand-stitched leaves. Furnishings in the W lounge were crafted with natural materials, including local timber and volcanic stone. In the two-bedroom villa, the sculptural seating was designed to resemble flower petals. Each of the 79 villas has its own pool.

0 5 10 20

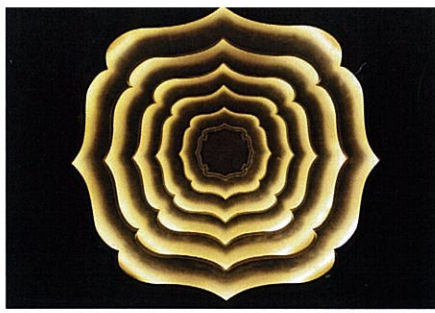


- 1 ENTRY
- 2 BATHROOM
- 3 SLEEPING AREA
- 4 LIVING AREA
- 5 BALCONY

“Throughout, we fused
festive colors and
distinctive architectural
shapes to instill an
adventurous spirit”

—ED NG





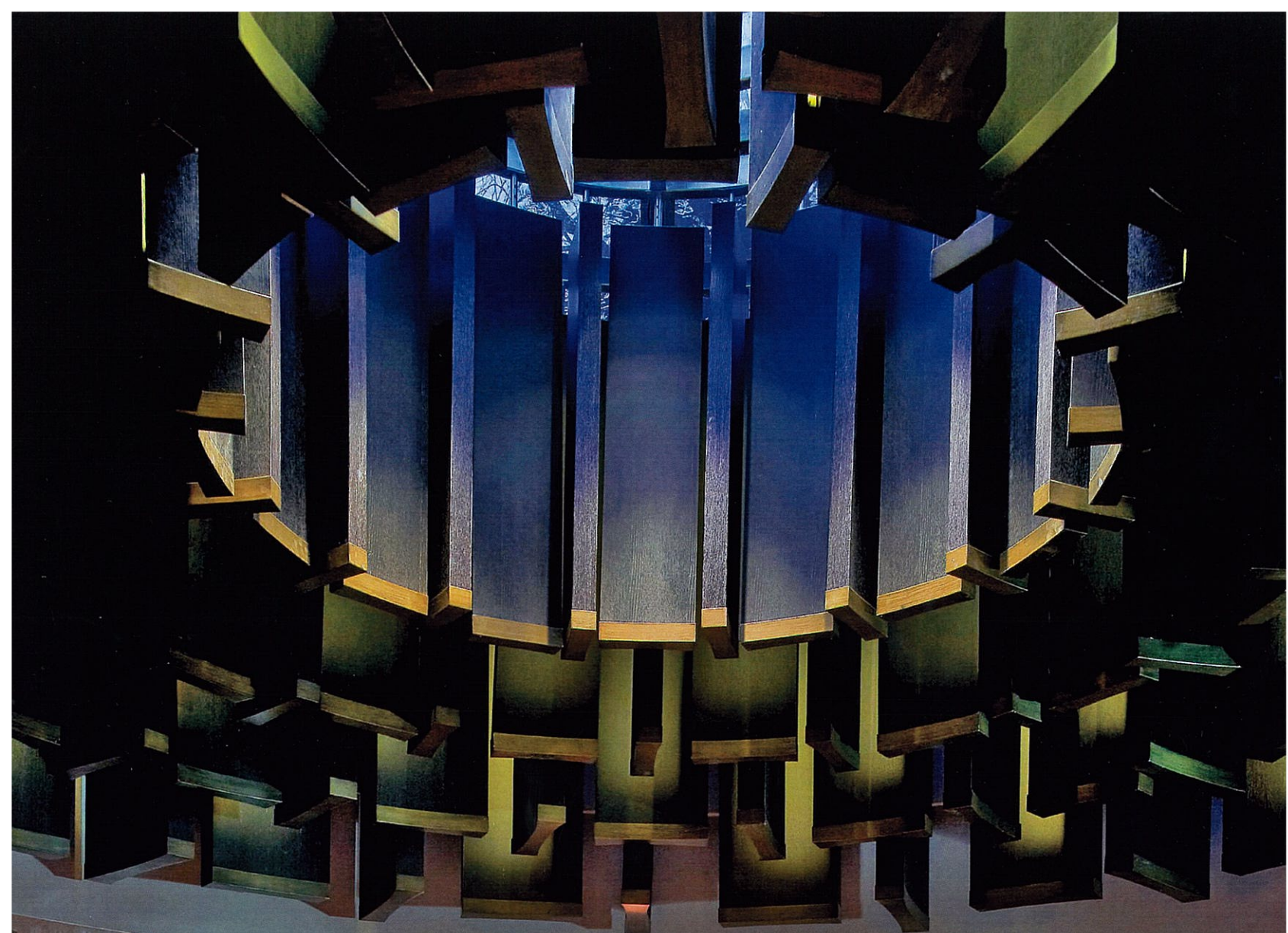
SHANG PALACE AND LI BAI LOUNGE
TAIPEI, TAIWAN

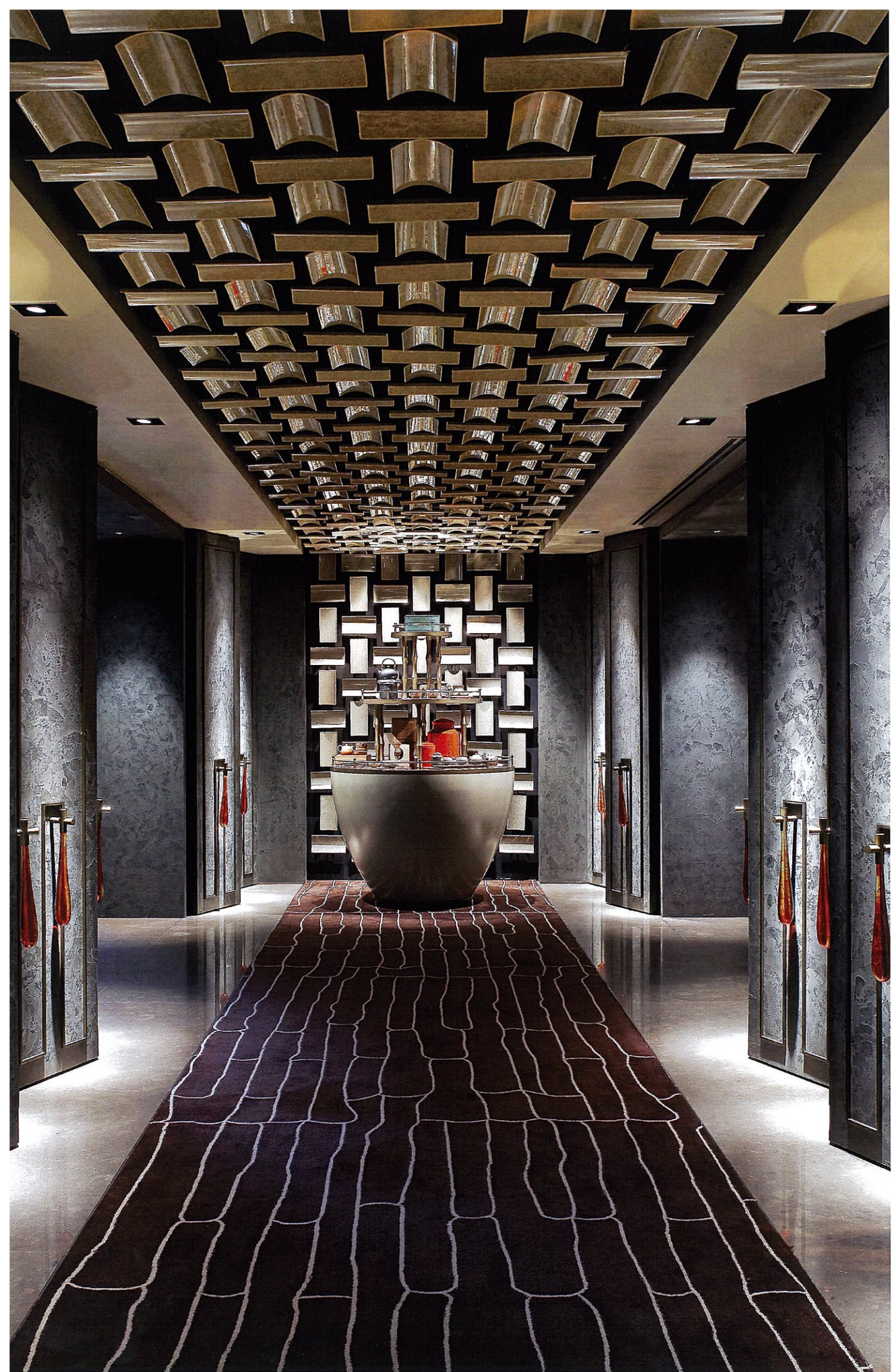
AB Concept

Located on the sixth floor of the Shangri-La Far Eastern Plaza Hotel, this atmospheric restaurant and lounge unspools via a series of wood-paneled corridors and moodily lit rooms. The seductive layout not only tantalizes guests but also helps distract from spatial challenges—namely low ceilings and an irregular floor plate.

Chinese iconography informs many details. A wall relief behind the maître d' stand is shaped like a celestial cloud, an ancient Asian motif. To the left is the lounge—inspired by Tang Dynasty romantic poet Li Bai—which channels a traditional Chinese scholar's pavilion by way of dark-wood finishes, muted lighting, and a ceiling layered with distressed-pine panels. The restaurant is reached by the "tea alley," a gallery lined with zigzagging oak doors that conceal storage. Bronze partitions divide the dining area into a series of intimate zones, serving to de-emphasize the modest headroom. The celestial cloud theme crops up again in a plaster ceiling relief as well as in upholstery and carpet patterns. And four private dining areas spiral around a skylit circular foyer clad in wood fins arrayed to form a stylized peony, a symbol of good fortune.

Clockwise from top: A close-up of the cloud-shape alcove behind reception, built from interlaced layers of timber treated with pearlescent paint. The peony-inspired skylight in the circular vestibule servicing private dining is lined with 6 1/2-foot-long bronze-tipped wood panels. Oak doors with blown-glass pulls and bronze accents line the tea alley, which leads to the restaurant. ➤





9,688 sf
55 seats (lounge)



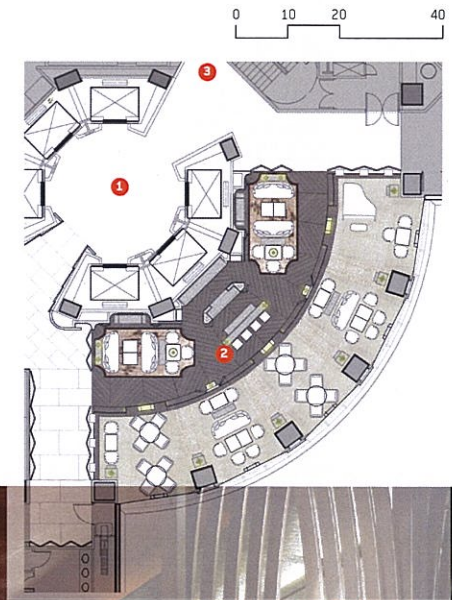
Clockwise from opposite: On the tea alley ceiling are concave ceramic tiles whose curves are echoed in the hand-tufted carpet. Suspended silk lanterns bracket the maître d' stand. Bronze screens inset with purple-glass medallions create cozy seating areas. The pine panels bordering the lounge ceiling were distressed with a wire brush.



PROJECT TEAM ED NG, TERENCE NGAN

PHOTOGRAPHY CHESTER ONG

www.abconcept.net



- 1 ELEVATOR CORRIDOR
- 2 LOUNGE
- 3 RESTAURANT



