

S I N G A P O R E T A T L E R

HOMES

THE INSIDER'S GUIDE TO LUXURIOUS LIVING

STATELY SPLENDOUR

Stylish domains that set
the scene for suave and
elegant entertaining



SINGAPORE TATLER HOMES

FEBRUARY - MARCH 2015

THE INSIDER'S GUIDE TO LUXURIOUS LIVING

EDIPRESSE



FEATURES: PHILIPPE NIGRO • 2015 TREND FORECAST • 10 STUNNING CHANDELIERS

S\$8.00
(INCL. GST)



Homes

126 Island Escape

The perfect holiday home for two families

134 Traditional Meets Contemporary

A modern home set in the tropics that's filled with plenty of traditional elements

144 Urban Oasis

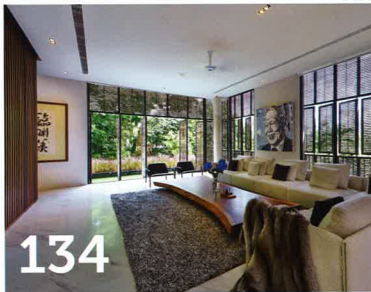
A luxurious retreat perched above Singapore's shopping district

154 Parisian Palace

An elegant Parisian pied-à-terre by interior architect Louis Henri Buhrmann

162 View From The Top

This penthouse in Hong Kong is designed to offer the best views of Victoria Harbour from every angle



154

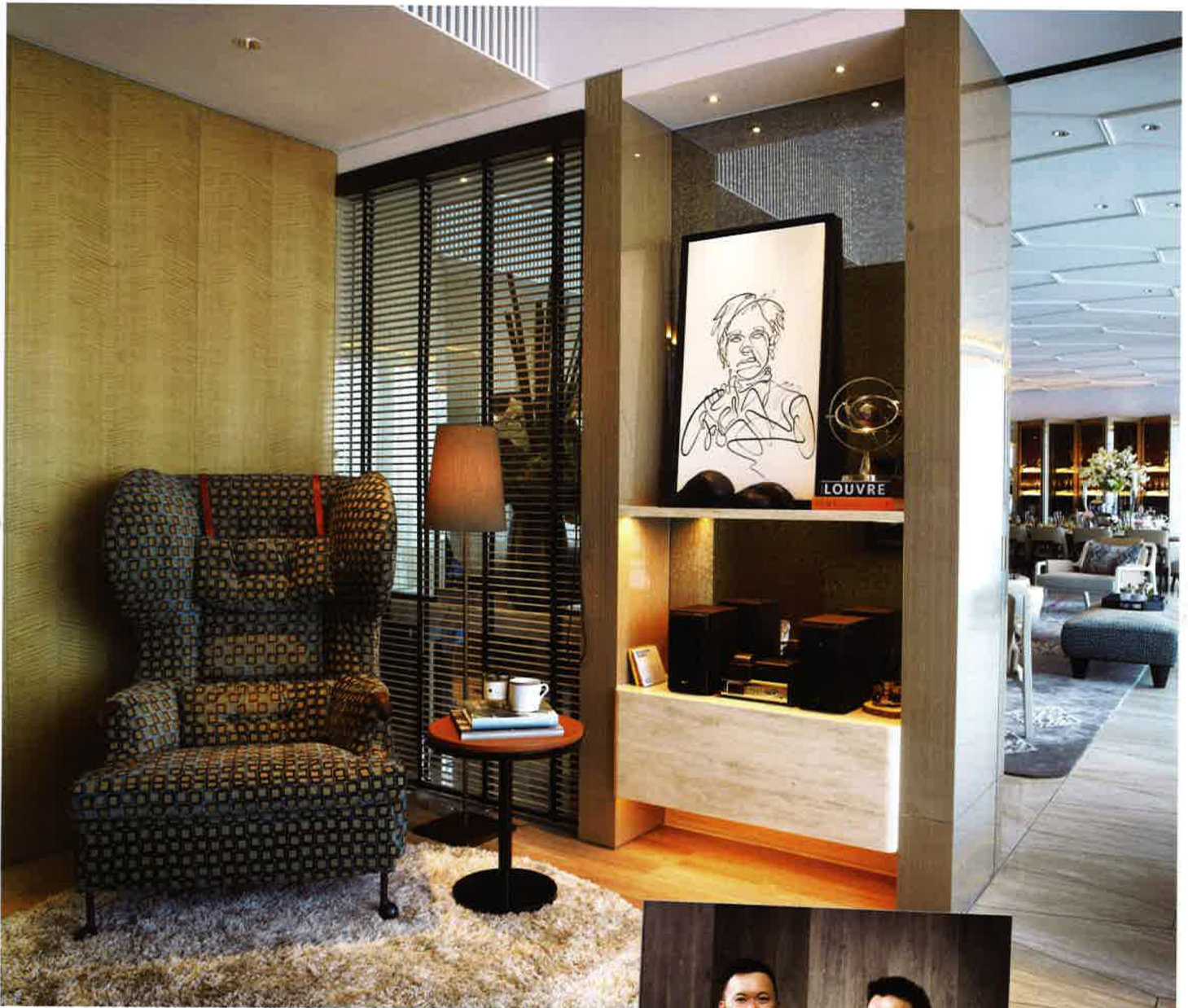
VIEW FROM THE TOP



*Dramatic Victoria Harbour vistas inform every aspect of the design
for this glamorous Hong Kong penthouse*

BY TAMSIN BRADSHAW





When it came to designing this 3,000 sq ft penthouse apartment in HongKong's The Gloucester, design firm AB Concept had the inside track in more ways than one. AB was the creative force behind the entire luxury development, so it knew the property very well. It also designed a literal track: a walkway that circumvents the home, and that runs next to the windows. This path is intended to maximise the home's most dramatic aspect – the jaw-dropping harbour views.

Terence Ngan and Ed Ng are the brains behind AB Concept, with Ngan overseeing the architectural, structural and spatial planning aspects of each project the designers work on together, and Ng directing the interiors. "While Ed and I are on the same wavelength, we each bring something different to every project," says Ngan. "Terence

PREVIOUS PAGE

The most dramatic aspect of this home is its spectacular views over Victoria Harbour. No matter which room the owners are in, Hong Kong's skyline takes centre stage

THIS PAGE, LEFT TO RIGHT

The 3,000 sq ft penthouse apartment incorporates some cosy nooks; Terence Ngan (right) and Ed Ng (left)

OPPOSITE PAGE

The triangular eight-seat dining table also takes into account the vistas, allowing every guest to enjoy Hong Kong's skyline



and I benefit from a rare synergy," agrees Ng. This is a partnership that has blossomed since it was formed in 1999, with the result that AB Concept has received a number of awards and worked on a series of high-profile projects including 39 Conduit Road, French Window Brasserie and Bar and Swire Properties' Argenta in Hong Kong, W Retreat & Spa Bali



The designers gave the home an open-plan layout that would enable Hong Kong's skyline to take centre stage, no matter which room you are in.





– Seminyak, Four Seasons Pudong, Mandarin Oriental, Singapore, plus several private residences.

Working on this penthouse project engaged the skills of both Ng and Ngan, as their client tasked them with creating a home that would emphasise the panoramas The Gloucester benefits from. The catwalk is one of many ways in which their design achieves this. It runs next to the floor-to-ceiling windows, and “acts like a gallery linking up all the spaces,” says Ng. In order to delineate this path, the designers worked with a different kind of stone from that used elsewhere in the home.

The walkway wasn’t the only element designed to emphasise the views. The designers gave the home an open-plan layout that would enable Hong Kong’s skyline to take centre stage, no matter which room you are in. And, says Ng,

OPPOSITE PAGE

A stone pathway runs alongside each room

THIS PAGE, LEFT TO RIGHT

Even the study area benefits from the breathtaking view: Subtle LED lighting helps keep the focus on the city lights outside and prevents reflection from the large windows



“The ceiling design, the orientation of the beds ... the seating arrangement in the living room, and even the design of the bay windows: everything was carefully planned in accordance with the client’s brief to take full advantage of the spectacular view.”

The ceiling is particularly unusual, curving gently to meet the top of the window frames, and directing your attention towards the cityscape outside. “As part of our focus on maximising the views, we used a curved ceiling to prevent any glare from the ceiling lights and banquettes from reflecting on the large windows,” says Ng, who explains that this particularly enhances the views at night.

The strip of LED lighting that runs around the edge of each room also helps keep the focus on the city lights at night, and away from reflections. “It





“The hexagonal pattern on the ceiling of the living and dining rooms was designed to add texture and detailing.”

illuminates the ceiling indirectly so that a very nice, subtle glow hits the room,” says Ng, explaining that AB Concept wanted to avoid “a lot of spotlights that reflected onto the glass.”

Even the furniture gives a nod to the vistas: “The triangular, eight-seat dining table, for example, enables every guest to enjoy Hong Kong’s skyline,” says Ng, who adds that the design team also curated an eclectic furniture collection which includes pieces from Caste, Ralph Pucci and Poltrona Frau.

These pieces help to create a richly layered, multi-dimensional space, as does the subtle but striking honeycomb motif that is repeated throughout the home. “The hexagonal pattern on the ceiling of the living and dining rooms was designed to add texture and detailing,” says Ng. The pattern appears again on the floor, with panels of

OPPOSITE PAGE

A mix of stone surfaces in the bathroom adds to the home’s luxurious feel

THIS PAGE

Positioned on a corner of the building, this bedroom benefits from a range of perspectives of Hong Kong. The hexagonal elements found elsewhere in the home are repeated on the rug

marble also cut into six-sided polygons, and striking geometric forms that spiral across the carpets.

There is a lot to see in this home, and yet it doesn’t feel overcrowded. This is partly due to the apartment’s subtle colour palette, which combines warm neutrals with blue and hints of amber, which Ng says is intended to convey a mood of quiet calm, while also adding contrast and “a sense of drama.”

The overall effect is luxurious, but quietly so. It’s clear to the discerning eye that the AB Concept designers have chosen the finest materials and included artisanal touches of the highest quality. For Ng and Ngan, working on this penthouse was the ultimate achievement after overseeing every aspect of the design for The Gloucester. “It’s the jewel in the crown: the perfect finale for our creation,” says Ng. **H**

THE BRIEF

- Type Of Home: Penthouse
- Size Of Property: 3,000 sq ft
- Interior Design: Terence Tan and Ed Ng / AB Concept
- Time Taken: 3 months